

# Leak Tester

## HS 805\_EL

HIGH PRECISION | EASY TO USE



VERSATILE | COMPACT SIZE



Our indigenously developed Leak Testers are based on the principle of pressure drop measurement, especially for small volumes.

Our standard Leak Test Instruments with specially designed fixtures and sealing mechanisms using the in house design facilities to provide the best solution to suit the specification. This Test Machine capability is enhanced by our experience in automated production line equipment and process automation resulting in a complete service to industry.

Our Next generation Electronic Leak Tester is excellent achievement in traditional Leak Testing and best solution for any automated systems . Each equipment is equipped with colour Touch Screen allowed for better visibility.

**Applications :** • Aerospace • Automotive • Household Appliances  
• Foundry • Valves • Brakes • Refrigeration • Medical  
• Gas • Cylinders • Heating, etc.

### Salient Features :

Pressure Range : 0.1 to 10 bar

Resolution : 1 Pa

RS 485, RS 232

4.3" Touch Panel

Password Protected

Selectable Various Pressure Unit

Selectable Leak Unit

Manual Regulator

Single Selectable Table

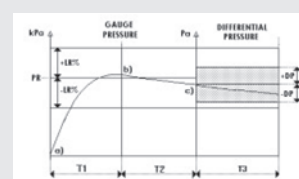
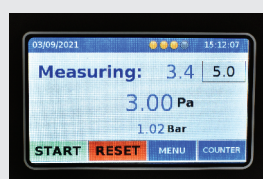
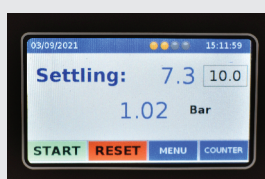
## Specifications :

Pre Requisite	:	Air Quality ISO 8573-1, Oil free, Dew point - 40 degree
Power Supply	:	External 24 VDC, 2.5 A max
Pressure Range	:	0.1 to 10 bar
Resolution	:	1 Pa
Pressure Accuracy	:	0.5 %
Pressure Regulator	:	Manual
Display	:	4.3" Touch Screen, Password Protected
Indicators	:	Pass, Fail Lamps on display
Clock	:	Date, Time on front
Programs	:	Single Test Table
Pressure Unit	:	Selectable various units :- bar, mbar, kpa, PSI, etc.
Leak Unit	:	Selectable various units :- pa, pa/sec, cc/min, cc/Hour, ml/min, ml/Hour
PLC Connections	:	Inputs :- Start, Reset, Outputs :- Pass, Fail
Data Interfaces	:	RS 485, RS 232
Cabinet	:	Aluminium Powder Coated

## Display of Leak Test Operation Phases while in Operation

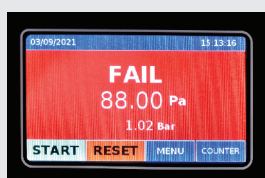
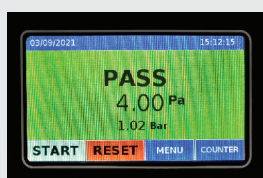
Leak Testing Phases: FILLING + SETTLING + MEASURING = PASS OR FAIL

Principle of Leak Testing



Results Indicating display

Data Acquisition Interfacing



Rear View

- Dimensions : 151 (H) x 191 (W) x 220 (L) mm
- Tube Connections : Dia 6 x 8 / Dia 4 x 6 mm
- Weight : Approx : 4 Kg



Note : We reserve the rights to change specifications accordingly to model without any information.

## S-Tech Automation Systems

### Leak and Flow Testing Equipments