

Flow Testers

Our indigenously developed Flow Testers are based on the principle of Mass Flow Measurement. Our standard Mass Flow Instruments with specially designed in accordance to meet specific quality requirement of the applications.

Mass Flow Testers are used to measure flow rate especially for exhaust systems. This Flow Testers are designed for quick test by measuring the flow rate of air through the product being tested at well defined pressure.

MODEL HS 603_EL

INNOVATIVE | HIGH PRECISION | EASY TO USE | VERSATILE



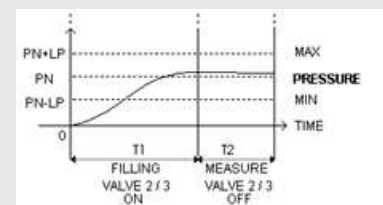
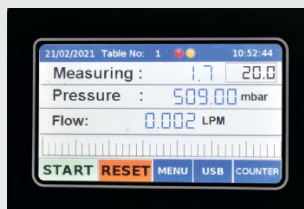
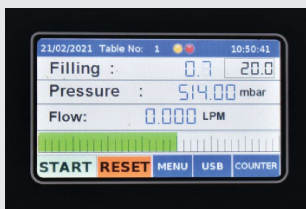
Specifications:

- Pressure up to 2 bar
- Flow rate measurement 0-5 LPM, 0-20 LPM, 0-50 LPM
- Resolution: 0.001 LPM
- RS 485 / RS 232 communication

Our next generation electronic Flow Tester is best outcome for ensuring best quality in a flow measuring applications. Graphical presentation ease operator to get proper monitoring of process.

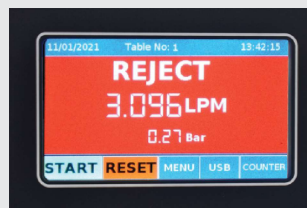
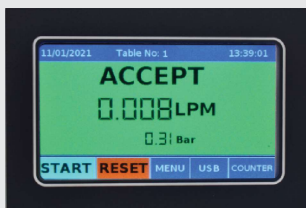
Flow Testing Phases: FILLING + SETTLING + MEASURING = PASS OR FAIL

Principle of flow testing



Results Indicating display

Data Acquisition Interfacing



Rear view

